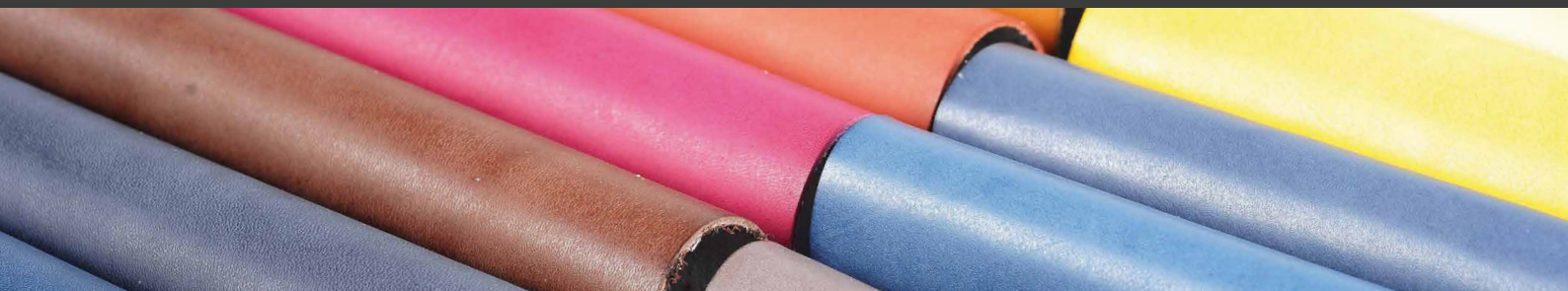




colorlac

COLOR YOUR BUSINESS



SOLUTIONS LEATHER



TMWL 1000

TECHNICAL FEATURES

Exceptional gloss // High concentration // Excellent uniformity of tint

READY TO USE WATER-BASED PAINTS FOR METALLIC EFFECT



Leather



Pigment



Water



Covering

DESCRIPTION / TMWL 1000 water-based tints for metallic effect.

USE / The products of TMWL1000 series are suitable for the finishing of all types of leather.

They are ready to use for roller coating. Apply on pigmented leathers in dark colors or of the same shade to get a shiny metallic effect.

MISCIBILITY / Concentrates of TMWL 1000 series are miscible with each other in any ratio to allow you to independently create new customized solutions.

OVERPAINTING / Then fasten with glossy, semi-gloss or matte water-based polyurethane finishing.

ROLLER APPLICATION / They are used as such.

TMWL 1100



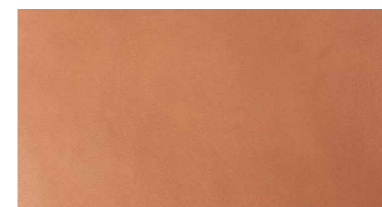
TMWL 1060



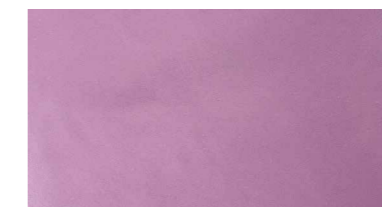
TMWL 1300



TMWL 1200



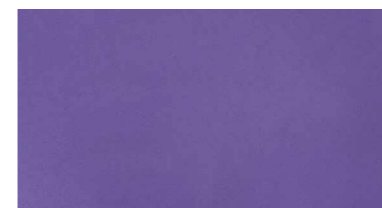
TMWL 1801



TMWL 1800



TMWL 1700



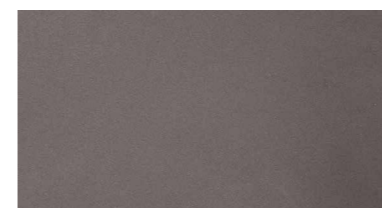
TMWL 1400



TMWL 1901



TMWL 1600



CODE	DRY MATTER	DENSITY	SOLUBILITY			LIGHT FASTNESS
			WATER	PM	BUTYL ACETATE	
TMWL 1060	16 ± 2%	1,03 Kg/l + 2%	+	-	-	8
TMWL 1100	13 ± 2%	1,07 Kg/l + 2%	+	-	-	8
TMWL 1200	13 ± 2%	1,01 Kg/l + 2%	+	-	-	4
TMWL 1300	13 ± 2%	1,01 Kg/l + 2%	+	-	-	7
TMWL 1400	13 ± 2%	1,01 Kg/l + 2%	+	-	-	7/8
TMWL 1600	13 ± 2%	1,01 Kg/l + 2%	+	-	-	8
TMWL 1700	13 ± 2%	1,01 Kg/l + 2%	+	-	-	7/8
TMWL 1800	13 ± 2%	1,01 Kg/l + 2%	+	-	-	7/8
TMWL 1801	13 ± 2%	1,01 Kg/l + 2%	+	-	-	7
TMWL 1901	13 ± 2%	1,01 Kg/l + 2%	+	-	-	8

Table legend: -- no -/ + fair + good

* Colors are only for illustrative purpose and may differ slightly from real tones

