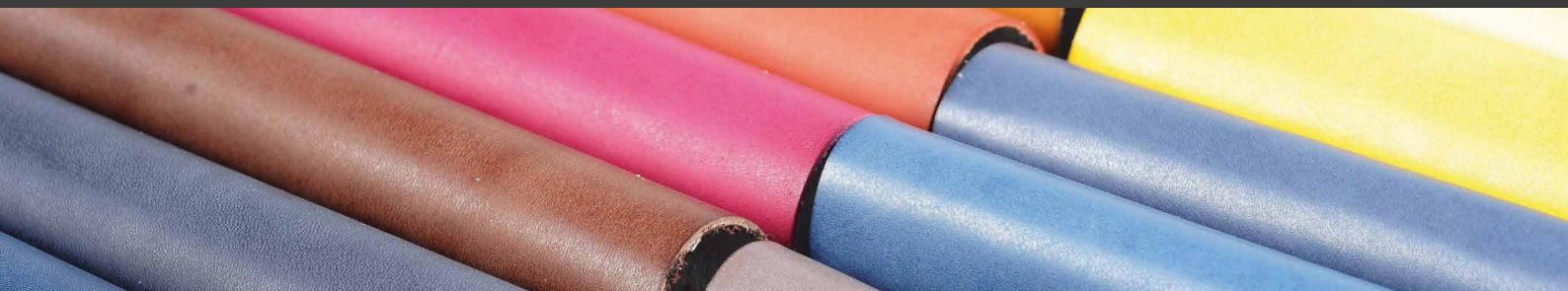




colorlac

COLOR YOUR BUSINESS



SOLUTIONS LEATHER

TECHNICAL FEATURES

High washing resistance // Good light fastness // Excellent gloss



Leather



Dye



Solvent



Trasparent

DESCRIPTION / TSC are metal-complex highly concentrated liquid dyes in PM solution.

USE / The products of TSC series are characterized by excellent resistance to washing, high concentration, transparency, brightness and uniformity of color. They are suitable for leather finishing by either spray or roller application.

SOLUBILITY / Good in glycols, alcohols, acetone and acetates.

MISCIBILITY / The TSC are miscible with nitrocellulose, polyurethane and acrylic solvent-based resins. The products of TSC series are miscible with each other in any ratio to allow you to independently create new customized solutions

Can be used in combination with penetrating agents, polar solvents and acetates both by spray or roller application.

SPRAY APPLICATION / TSC can be applied manually, with aerograph, or mechanically with rotary machine after dilution with glycols, acetates and alcohols.

FINISHING TO EFFECT / TSC can be used for the finishing effect with acrylic resins, top, nitrocellulose and polyurethane in solvents.

CODE	COLOR INDEX	DRY MATTER	DENSITY	SOLUBILITY			LIGHT FASTNESS	WATER SPOTTING RESISTANCE	PVC MIGRATION FASTNESS
				WATER	PM	BUTYL ACETATE			
TSC 1020	SOLVENT ORANGE 62	10 ± 2 %	0,95 Kg/l + 2%	--	+	+ (dilution 1:1 in PM /ACETATE)	6/7	5	1
TSC 1030	SOLVENT YELLOW 21	10 ± 2 %	0,95 Kg/l + 2%	--	+	+	5/6	5	1
TSC 1032	ACID YELLOW 110	10 ± 2 %	0,97 Kg/l + 2%	--	+	+ (dilution 1:1 in PM /ACETATE)	3	5	1
TSC 1040	SOLVENT BLUE 70	10 ± 2 %	0,95 Kg/l + 2%	--	+	+	4/5	5	1
TSC 1041	SOLVENT BLACK 34	8 ± 1 %	0,95 Kg/l + 2%	--	+	+	4	5	1
TSC 1042	SOLVENT BLUE 70	8 ± 1 %	0,95 Kg/l + 2%	--	+	+ (dilution 1:1 in PM /ACETATE)	4/5	5	1
TSC 1050	MIX	10 ± 2 %	0,95 Kg/l + 2%	--	+	+	6/7	5	1
TSC 1051	MIX	10 ± 2 %	0,95 Kg/l + 2%	--	+	+ (dilution 1:1 in PM /ACETATE)	6/7	5	1
TSC 1052	MIX	10 ± 2 %	0,95 Kg/l + 2%	--	+	-/+ (dilution 1:1 in PM /ACETATE)	6/7	5	1
TSC 1060	SOLVENT BLACK 27	10 ± 2 %	0,95 Kg/l + 2%	--	+	+ (dilution 1:1 in PM /ACETATE)	7/8	5	1
TSC 1080	SOLVENT RED 8	10 ± 2 %	0,95 Kg/l + 2%	--	+	+	6/7	5	1
TSC 1081	SOLVENT RED 122	10 ± 2 %	0,95 Kg/l + 2%	--	+	+ (dilution 1:1 in PM /ACETATE)	5/6	5	1
TSC 1082	SOLVENT RED 127	10 ± 2 %	0,95 Kg/l + 2%	--	+	-	3	5	1
TSC 1090	MIX	10 ± 2 %	0,95 Kg/l + 2%	--	+	+	4/5	5	1

Table legend: -- no - poor -/+ fair + good

DYES WITH HIGH RESISTANCE TO WASHING

TSC 1032 / C.I.ACID YELLOW 110



TSC 1030 / C.I.SOLVENT YELLOW 21



TSC 1020 / C.I.SOLVENT ORANGE 62



TSC 1081 / C.I.SOLVENT RED 122



TSC 1080 / C.I.SOLVENT RED 8



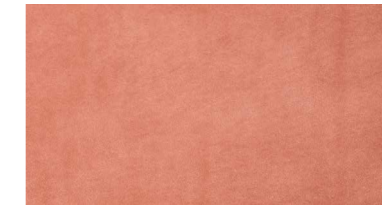
TSC 1082 / C.I.SOLVENT RED 127



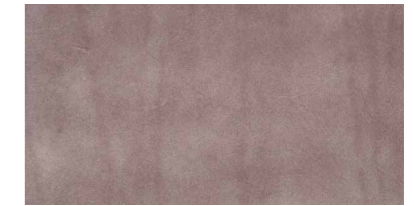
TSC 1052 / C.I.MIX



TSC 1051 / C.I.MIX



TSC 1050 / C.I.MIX



TSC 1040 / C.I.SOLVENT BLUE 70



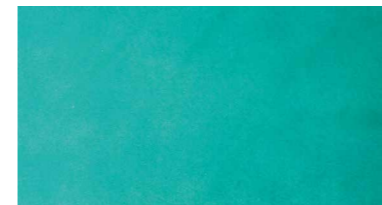
TSC 1042 / C.I.SOLVENT BLUE 70



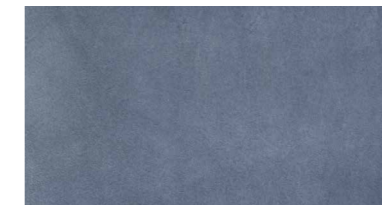
TSC 1041 / C.I.SOLVENT BLACK 34



TSC 1090 / C.I.MIX



TSC 1060 / C.I.SOLVENT BLACK 27



* Colors are only for illustrative purpose and may differ slightly from real tones

